



Immersive HD Model 6.5HD2

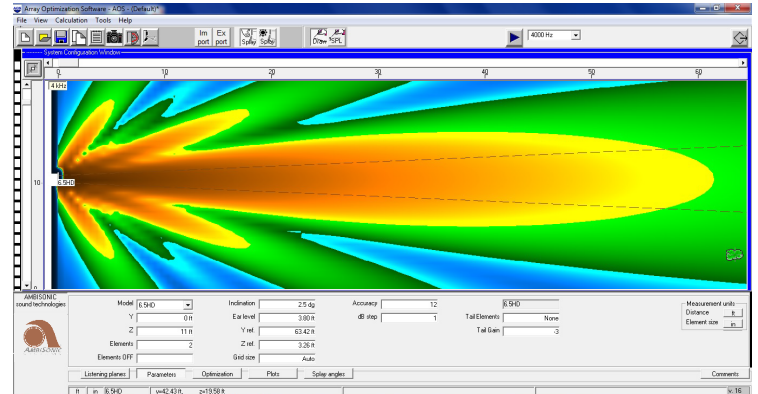


Shown with Universal Mounting Bracket (BKT-6.5UB) for wall or ceiling (Included)

Description:

The 6.5HD2 consists of a pair of 6.5HD loudspeakers configured as a coupled splayed array to produce more output (+6db) and more vertical control for longer throw distances and greater intelligibility. Shipped as shown and pre-wired for single channel operation.

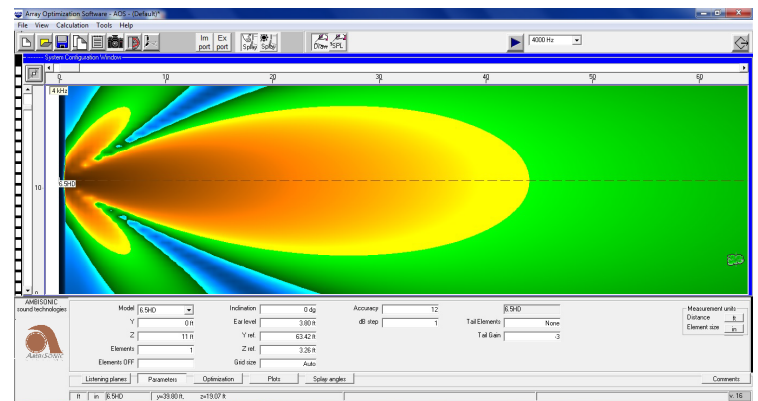
6.5HD2 coupled splayed array: SPL / Distance



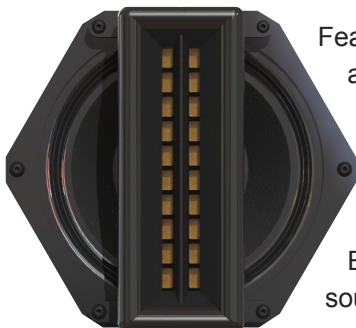
Features:

- Ultra-fast transient response and higher instantaneous peak level for faithful signal reproduction and improved dynamic range
- Wide Horizontal dispersion for excellent stereo imaging and larger listening area
- Well controlled vertical dispersion reduces floor and ceiling reflections and yields longer listening distances
- Robust enclosure and components
- Unique woofer and ribbon wave guides for better dispersion and fidelity
- All stainless steel hardware and powder coated mounting brackets
- Trapezoidal form factor allows the 6.5HD to be used as a building block (module) for the ultimate high fidelity, high definition line arrays

Single 6.5HD: SPL / Distance



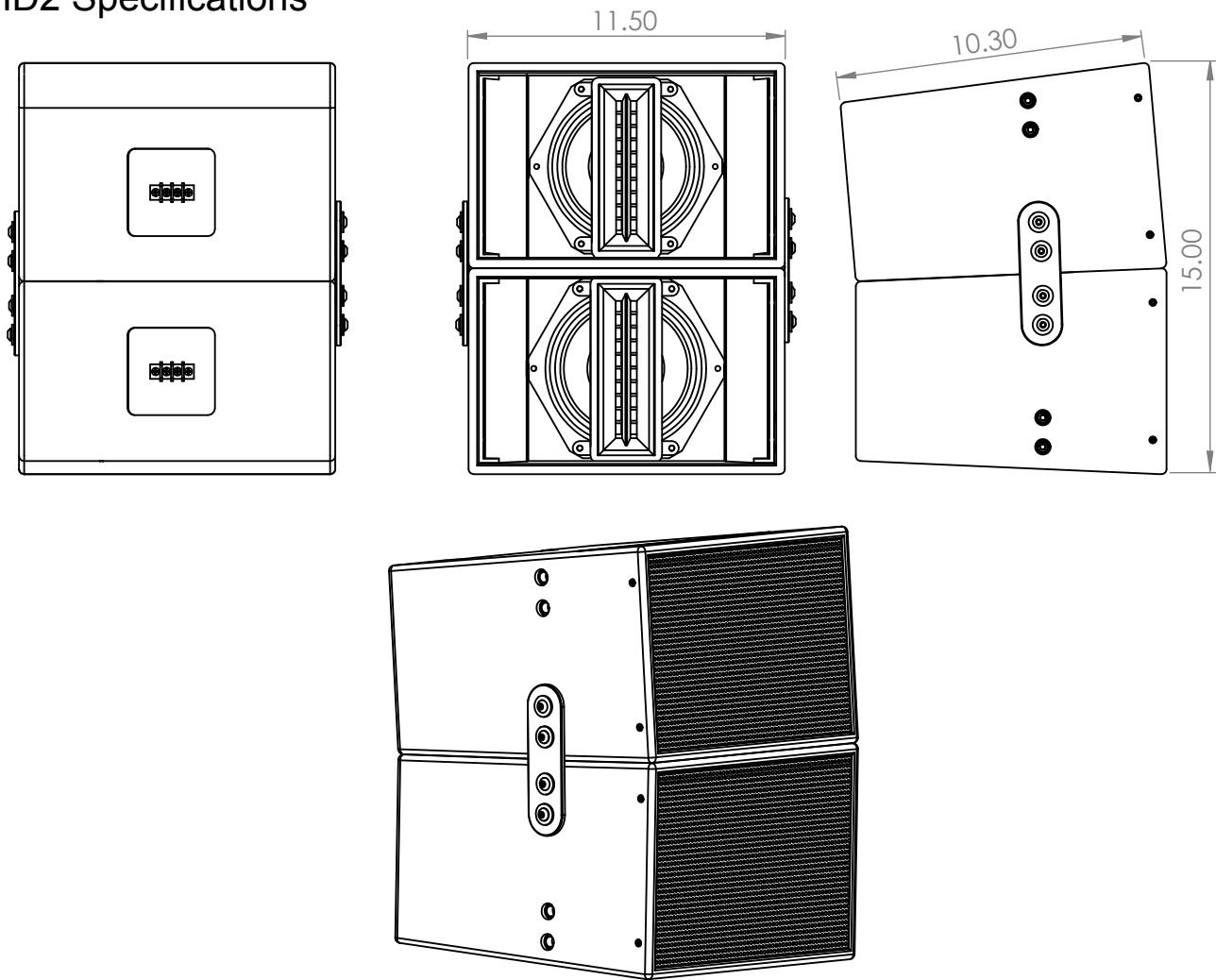
Detail with Universal Mount



Featuring a 6" Planar Magnetic Ribbon and a 6.5" woofer in a true coaxial configuration producing a perfectly symmetrical coverage pattern and lower distortion due to the alignment's acoustic filter effect. Evenly dispersed, audiophile-quality sound even at the highest output levels.



6.5HD2 Specifications



System Type	2 box coupled splayed array Hybrid Coaxial, ribbon, woofer, two-way full range
Driver Components	2 x 6" ribbon driver +2 x 6.5" composite cone woofer (All Weather)
Frequency Response	50 Hz - 20 kHz (-10db) 78hz – 20khz +/- 3db
Maximum SPL	115db Continuous, 121db Peak
System coverage	110-degree horizontal, 40-degree vertical (averaged from 1k to 8k)
Sensitivity, 1m/2.83V	95 dB
Power Handling	200W AES, 400W Program, 800W Peak
Recomended Amplifier Power	200 W - 800W (FTC) @ 4 Ohms
Rated Impedance	4 Ohms nominal, 3.4 ohms min @ 160hz
Crossover	Passive, custom (1500hz)
Input Connectors	Screw terminal barrier strip
Enclosure	Extensively braced Baltic Birch sealed trapezoid
Mounting (Included)	Universal Mount
Dimensions, (H x W x D)	15" (38cm) x 11.5" (29.21cm) x 10.3" (26.2cm)
Weight, net / shipping	32Lbs (14.5kg) / 38Lbs (17.27kg)
Warranty	Limited 3-year warranty



6.5HD Directivity

